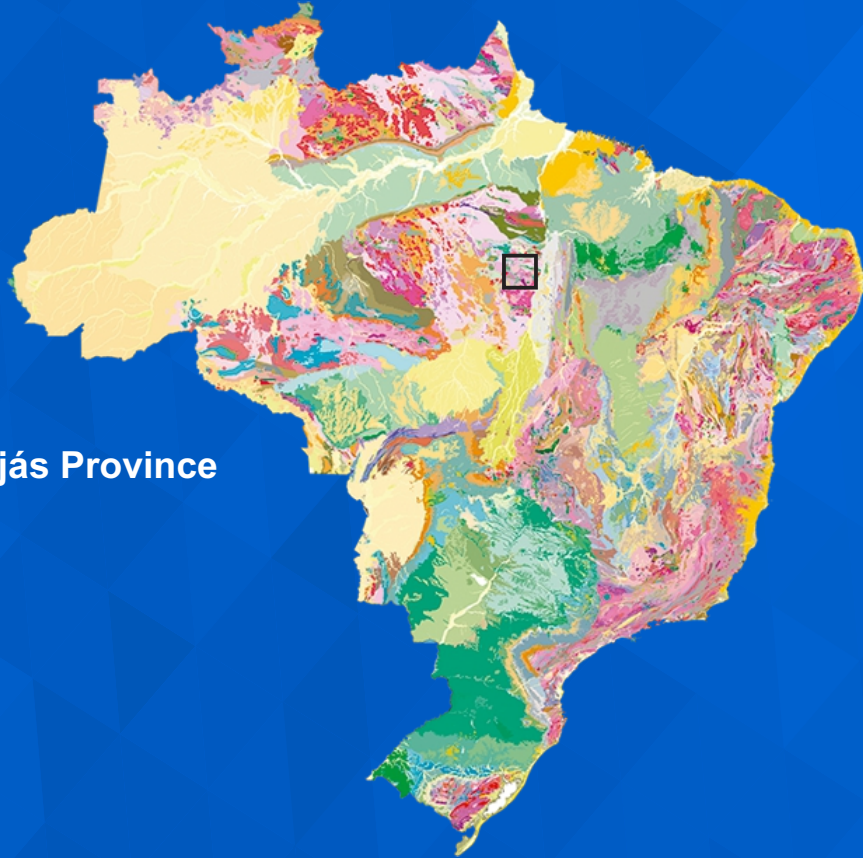




Journal of the Geological Survey of Brazil

VOLUME 1 (3) – DECEMBER 2018



Contents

- p. 101-112 - Insights on the Carajás Province from gravity data



ISSN: 2595-1939

DOI: <https://doi.org/10.29396/jgsb.2018.v1.n3>



Journal of the Geological Survey of Brazil

Table of Contents

Insights on the framework of the Carajás Province, Amazonian Craton, Brazil, and on the three-dimensional shape of the Carajás Basin, based on gravity data

Roberto Gusmão de Oliveira

101-112





Journal of the Geological Survey of Brazil

Numbers of 2018 and Acknowledgements to the Reviewers

In 2018, the first year of existence, 8 papers (among 15 manuscripts with final decision) were published in the Journal of the Geological Survey of Brazil (JGSB). The average time to first decision was 61 days and the average time to on-line publication of accepted manuscripts was 94 days. Rejection percentage was 13%, and 33% were archived (revisions not returned in due time), which gives an acceptance rate of 53%. The Editorial Board acknowledges the authors who submitted their research, and the cooperation of the reviewers for the time they dedicated, since peer review is essential for the publication process, in order to ensure the desired high quality standards for the published papers.

Evandro Klein
Editor-in-Chief
 On behalf of the Editorial Board

Reviewer	Affiliation	City/Country*
Alena Kadetova	Institute of the Earth's Crust	Irkutsk, Russia
Ana Maria Dreher	Geological Survey of Brazil	Rio de Janeiro
Andre L.B. Cavalcante	Universidade de Brasília	Brasília
Arno Brichta	Universidade Federal da Bahia	Salvador
Carlos Salazar	Universidade Federal do Amazonas	Manaus
Claudio Gerheim Porto	Universidade Federal do Rio de Janeiro	Rio de Janeiro
Cristina Pinto Lira	Universidade de Lisboa	Lisboa, Portugal
David Lopes de Castro	Universidade Federal do Rio Grande do Norte	Natal
Eric Lipten	Newmont Mining Corporation	Greenwood Village, USA
Felipe Mattos Tavares	Geological Survey of Brazil	Rio de Janeiro
Francisco Ferreira	Universidade Federal do Paraná	Curitiba
Gabriel Uhlein	Universidade Federal de Minas Gerais	Belo Horizonte
Jacqueline Albino	Universidade Federal do Espírito Santo	Vitória
Jean-Michel Lafon	Universidade Federal do Pará	Belém
João Orestes S. Santos	University of Western Australia	Perth, Australia
Jorge Roncato	Universidade Federal de Minas Gerais	Belo Horizonte
Lêda Maria Barreto Fraga	Geological Survey of Brazil	Rio de Janeiro
Máisa Bastos Abram	Geological Survey of Brazil	Salvador
Maysam Abedi	University of Tehran	Tehran, Iran
Marcelo Bianchi	Universidade de São Paulo	São Paulo
Maria Helena Henriques	Universidade de Coimbra	Coimbra, Portugal
Mélanie Bertrand	IRSTEA	Grenoble, France
Moacir J.B. Macambira	Universidade Federal do Pará	Belém
Pamella Moura	Universidade Federal do Ceará	Fortaleza
Raimundo M.G. Castelo Branco	Universidade Federal do Ceará	Fortaleza
Robert Chapman	University of Leeds	Leeds, UK
Rodrigo Adórno	Geological Survey of Brazil	Belo Horizonte
Sergio Pacheco Neves	Universidade Federal de Pernambuco	Recife
Wilson Scarpelli	Independent consultant	Cotia
Zorano Sergio de Souza	Universidade Federal do Rio Grande do Norte	Natal

*Brazil if not specified



Journal of the Geological Survey of Brazil

Published on line at: jgsb.cprm.gov.br
ISSN: 2595-1939
DOI: <https://doi.org/10.29396>
DOI of this edition:
<https://doi.org/10.29396/jgsb.2018.v1.n3>

Contact:
Editor-in-Chief
SBN, Q. 2, Bloco H, 1° andar
Edifício Central Brasília
Brasília - DF - Brazil
CEP: 70040-904
Phone: +55 61 2108.8400
e-mail: editor_jgsb@cprm.gov.br

EDITORIAL BOARD

Editor-in-Chief

Evandro Luiz Klein, *CPRM – Geological Survey of Brazil, Brasília, Brazil*

Associate Editors

Adalene Moreira Silva, *UnB – Universidade de Brasília, Brazil*

Carlos Alberto Spier, *University of Queensland, Brisbane, Australia*

Cassio Roberto da Silva, *CPRM – Geological Survey of Brazil, Rio de Janeiro, Brazil*

Chris Harris, *UCT – University of Cape Town, South Africa*

David Lopes de Castro, *UFRN – Universidade Federal do Rio Grande do Norte, Natal, Brazil*

Fabricio de Andrade Caxito, *UFMG – Universidade Federal de Minas Gerais, Belo Horizonte, Brazil*

Jean Michel Lafon, *UFPA – Universidade Federal do Pará, Belém, Brazil*

Katia Leite Mansur, *UFRJ – Universidade Federal do Rio de Janeiro, Rio de Janeiro, Brazil*

Lena Virgínia Soares Monteiro, *USP – Universidade de São Paulo, Brazil*

Luciano Soares da Cunha, *UnB – Universidade de Brasília, Brazil*

Luiz Carlos da Silva, *CPRM – Independent Consultant, Belo Horizonte, Brazil*

Sandra Fernandes da Silva, *CPRM – Geological Survey of Brazil, Belo Horizonte, Brazil*

Steffen Hagemann, *UWA – University of Western Australia, Perth, Australia*

Advisory Board

Ana Maria Dreher, *CPRM – Independent Consultant, Rio de Janeiro, Brazil*

Daniel Medeiros Moreira, *CPRM – Geological Survey of Brazil, Rio de Janeiro, Brazil*

Leda Maria Barreto Fraga, *CPRM – Geological Survey of Brazil, Rio de Janeiro, Brazil*

Lucia Travassos da Rosa Costa, *CPRM – Geological Survey of Brazil, Belém, Brazil*

Luiz Gustavo Rodrigues Pinto, *CPRM - Geological Survey of Brazil, São Paulo, Brazil*

Marcelo Eduardo Dantas, *CPRM – Geological Survey of Brazil, Rio de Janeiro, Brazil*

Marcelo Esteves Almeida, *CPRM – Geological Survey of Brazil, Rio de Janeiro, Brazil*

Marta Vasconcelos Ottoni, *CPRM – Geological Survey of Brazil, Rio de Janeiro, Brazil*

Pedro Augusto dos Santos Pfaltzgraff, *CPRM – Geological Survey of Brazil, Rio de Janeiro, Brazil*

Rodrigo Rodrigues Adorno, *CPRM – Geological Survey of Brazil, Belo Horizonte, Brazil*

Sheila Gatinho Teixeira, *CPRM – Geological Survey of Brazil, Belém, Brazil*

Vladimir Cruz de Medeiros, *CPRM – Geological Survey of Brazil, Natal, Brazil*

