

Journal of the Geological Survey of Brazil



Vol 6. n2. August 2023

Contents

Research Papers

- **The Pitangui Synclinorium, Quadrilátero Ferrífero mineral province - Brazil**
- **Bauxite laterite, São Francisco Craton, Brazil: potential for rare earth elements mineralization**
- **Geophysical and geological framework of the southern edge of the Parnaíba Basin, NE Brazil**

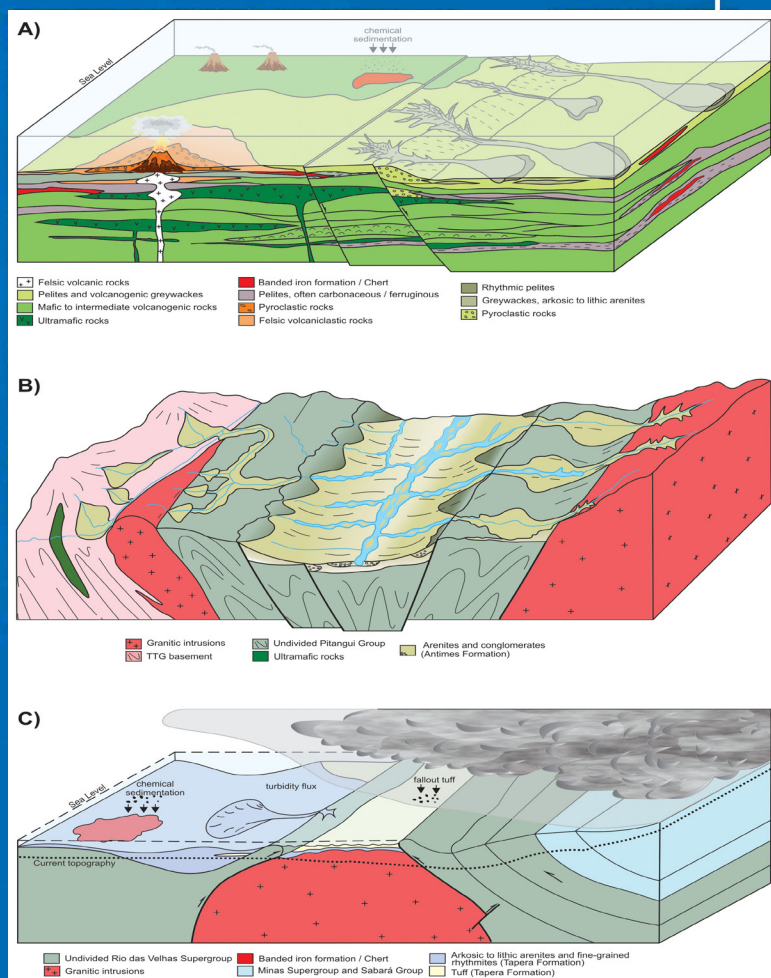




Table of Contents

RESEARCH PAPERS

- [Stratigraphy of the Pitangui Synclinorium, northwest of the Quadrilátero Ferrífero mineral province - Brazil: magmatism and sedimentation from Archean to Neoproterozoic](#) 135-164
Marcelo Marinho, Joana Magalhães, Julio Lombello, Joanna Araújo, Luiz P. P. Di Salvo, Rosane Nascimento Silva, Denise Canabrava Brito, Wilson Feboli, Camila Franco Basto
- [The bauxite-bearing lateritic profile of the Jequié Complex, São Francisco Craton, Brazil: potential for rare earth elements mineralization and insights on the mineral system](#) 165-191
Daniel Augusto de Miranda, Caroline Couto Santos, Fabrício Pereira dos Santos; Anderson Roque Araújo dos Santos Menezes; Carlos Magno Santos Clemente, Rita Cunha Leal Menezes de Oliveira, Isabel Leonor Iza Echeverria Herrera
- [Geophysical and geological framework of the southern edge of the Parnaíba Basin, NE Brazil](#) 193-215
Nilo Pedrosa Jr., Elizangela Amaral Mota, Magno Sá Freitas

Cover image: Depositional models for the Pitangui Synclinorium (Marinho M.S. et al. 2023, this issue).



EDITORIAL BOARD

Editor-in-Chief

Evandro Luiz Klein, Geological Survey of Brazil, Brasília, Brazil

Associate Editors

Adalene Moreira Silva, UnB – Universidade de Brasília, Brazil
Carlos Alberto Spier, University of Queensland, Brisbane, Australia
Cassio Roberto da Silva, Geological Survey of Brazil, Rio de Janeiro, Brazil
Chris Harris, UCT - University of Cape Town, South Africa
Christophe Renac, Université de Nice Sophia Antipolis, Nice, Provence-Alpes-Côte d'Azur, France
David Lopes de Castro, UFRN – Universidade Federal do Rio Grande do Norte, Natal, Brazil
Fabrício de Andrade Caxito, UFMG – Universidade Federal de Minas Gerais, Belo Horizonte, Brazil
Henri Masquelin, Universidad de la República, Montevideo, Uruguay
Jean Michel Lafon, UFPA – Universidade Federal do Pará, Belém, Brazil
Joana Angélica Guimarães da Luz – UFSB - Universidade Federal do Sul da Bahia, Brazil
Katia Leite Mansur, UFRJ – Universidade Federal do Rio de Janeiro, Rio de Janeiro, Brazil
Lena Virgínia Soares Monteiro, USP – Universidade de São Paulo, Brazil
Luciano Soares da Cunha, UnB – Universidade de Brasília, Brazil
Martin Roddaz, Université Toulouse III - Paul Sabatier, Toulouse, France
Riadh Abidi, Université de Tunis El Manar, Tunis, Tunisia
Rodrigo Scalise Horodyski, Unisinos, São Leopoldo, Brazil
Sandra Fernandes da Silva, Geological Survey of Brazil, Belo Horizonte, Brazil
Steffen Hagemann, UWA – University of Western Australia, Perth, Australia
Vladimir Cruz de Medeiros, Geological Survey of Brazil, Natal, Brazil

Advisory Board

Ana Maria Dreher, CPRM – Geological Survey of Brazil, Rio de Janeiro, Brazil
Daniel Medeiros Moreira, CPRM – Geological Survey of Brazil, Rio de Janeiro, Brazil
Leda Maria Barreto Fraga – CPRM – Geological Survey of Brazil, Rio de Janeiro, Brazil
Lucia Travassos da Rosa Costa, CPRM – Geological Survey of Brazil, Belém, Brazil
Luiz Gustavo Rodrigues Pinto, CPRM - Geological Survey of Brazil, São Paulo, Brazil
Marcelo Eduardo Dantas, CPRM – Geological Survey of Brazil, Rio de Janeiro, Brazil
Marcelo Esteves Almeida, CPRM – Geological Survey of Brazil, Rio de Janeiro, Brazil
Marta Vasconcelos Ottoni, CPRM – Geological Survey of Brazil, Rio de Janeiro, Brazil
Pedro Augusto dos Santos Pfaltzgraaf, CPRM – Geological Survey of Brazil, Rio de Janeiro, Brazil
Rodrigo Rodrigues Adorno, CPRM – Geological Survey of Brazil, Belo Horizonte, Brazil
Sheila Gatinho Teixeira, CPRM – Geological Survey of Brazil, Belém, Brazil





Journal of the Geological Survey of Brazil

Journal of the Geological Survey of Brazil
Published on-line at <https://jgsb.sgb.gov.br/index.php/journal>

Contact
Editor-in-Chief
SBN, Q.2, Bloco H, 1º andar
Edifício Central Brasília
Brasília - DF - Brazil - CEP: 70040-904
Phone: +55 61 2108-8400
E-mail: editor_jgsb@sgb.gov.br

Editorial Board

Editor-in-Chief

Evandro Luiz Klein, CPRM – Geological Survey of Brazil, Brasília, Brazil

Associate Editors

Adalene Moreira Silva, UnB – Universidade de Brasília, Brazil

Carlos Alberto Spier, University of Queensland, Brisbane, Australia

Cassio Roberto da Silva, CPRM – Geological Survey of Brazil, Rio de Janeiro, Brazil

Chris Harris, UCT - University of Cape Town, South Africa

Christophe Renac, Université de Nice Sophia Antipolis, Nice, Provence-Alpes-Côte d'Azur, France

David Lopes de Castro, UFRN – Universidade Federal do Rio Grande do Norte, Natal, Brazil

Fabricio de Andrade Caxito, UFMG – Universidade Federal de Minas Gerais, Belo Horizonte, Brazil

Henri Masquelin, Universidad de la República, Montevideo, Uruguay

Jean Michel Lafon, UFPA – Universidade Federal do Pará, Belém, Brazil

Joana Angélica Guimarães da Luz – UFSB - Universidade Federal do Sul da Bahia, Brazil

Katia Leite Mansur, UFRJ – Universidade Federal do Rio de Janeiro, Rio de Janeiro, Brazil

Lena Virgínia Soares Monteiro, USP – Universidade de São Paulo, Brazil

Luciano Soares da Cunha, UnB – Universidade de Brasília, Brazil

Martin Roddaz, Université Toulouse III - Paul Sabatier, Toulouse, France

Riadh Abidi, Université de Tunis El Manar, Tunis, Tunisia

Rodrigo Scalise Horodyski, Unisinos, São Leopoldo, Brazil

Sandra Fernandes da Silva, CPRM – Geological Survey of Brazil, Belo Horizonte, Brazil

Steffen Hagemann, UWA – University of Western Australia, Perth, Australia

Vladimir Cruz de Medeiros, CPRM – Geological Survey of Brazil, Natal, Brazil

