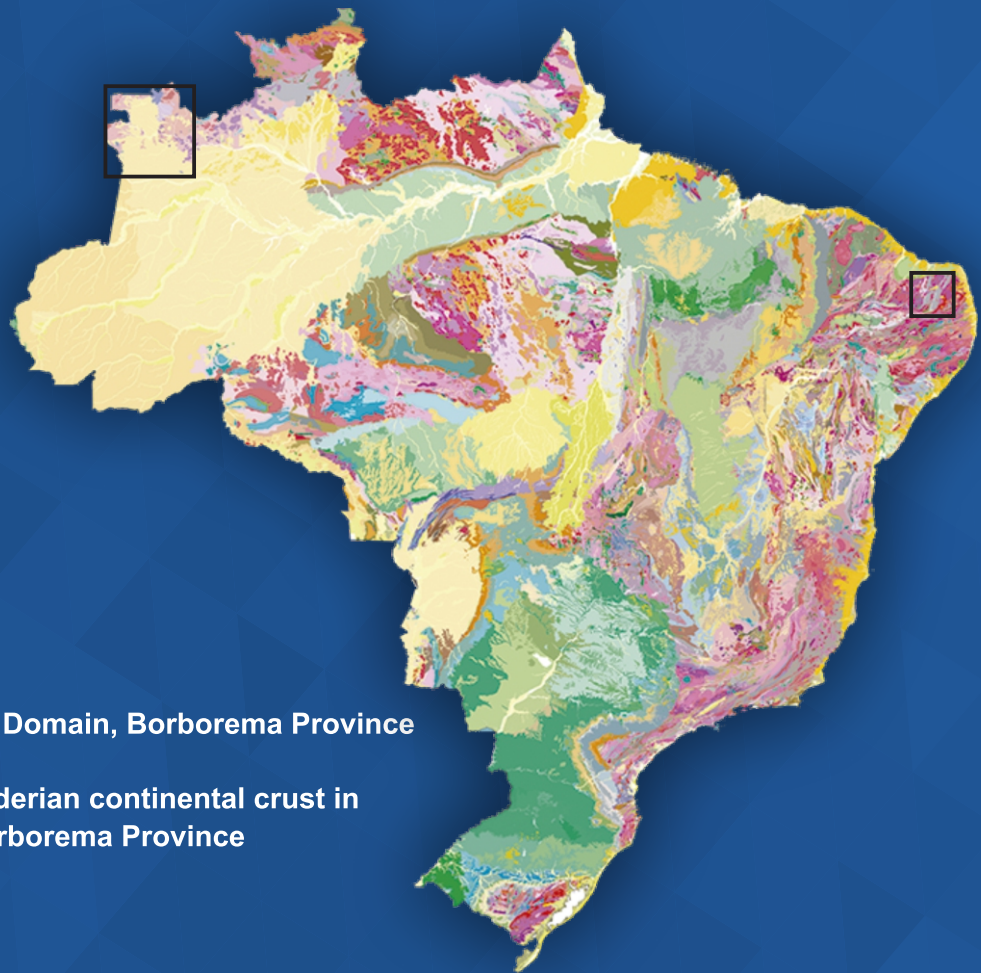


Journal of the Geological Survey of Brazil



VOLUME 4 (3) DECEMBER 2021



Contents

Research Papers

- p. 179-207 - The Rio Piranhas-Seridó Domain, Borborema Province
- p. 223-237 - Fragments of juvenile Siderian continental crust in the Rio Piranhas-Seridó Domain, Borborema Province

Review Articles

- p. 209-222 - The Alto Rio Negro region, Northwestern Amazonian Craton
- p. 239-256 - Low-temperature thermochronometry in Brazil





Journal of the Geological Survey of Brazil

Table of Contents

RESEARCH PAPERS

[The Rio Piranhas-Seridó Domain, Borborema Province, Northeastern Brazil: Review of geological-geochronological data and implications for stratigraphy and crustal evolution](#) 179-207
Vladimir Cruz de Medeiros, Rogério Cavalcante, Frank Gurgel Santos, Joseneusa Brilhante Rodrigues, Jocilene dos Santos Santana, Alan Pereira da Costa, Izaac Cabral Neto

[Fragments of juvenile Siderian continental crust in the Rio Piranhas-Seridó Domain, Borborema Province, Northeastern Brazil, as deduced by zircon U-Pb and whole-rock Sm-Nd systematics](#) 223-237
Alan Costa, Rogério Cavalcante, Alexandre Dantas, Joseneusa Rodrigues, André Cunha, Geysson Lages, Vanja Alcântara, Rafael Lima, André Spisila

REVIEW ARTICLES

[Geological knowledge advances on the Alto Rio Negro region, northwestern Amazonian Craton, Brazil: a review](#) 209-222
Pedro Igor Veillard Farias, Estevão Freire, Armando Lucas Cherem da Cunha, Adelaide Maria de Souza Antunes

[The state of the art of low-temperature thermochronometry in Brazil](#) 239-256
Tiago Amâncio Novo, Tobias Maia Rabelo Fonte-Boa, Júlia Mattioli Rolim, Ana Carolina Fonseca



Numbers of 2021 and Acknowledgements to the Reviewers

In 2021, twenty-three papers (among 30 manuscripts with final decision) were published in the *Journal of the Geological Survey of Brazil (JGSB)*, in three regular and one special issue. Rejection percentage was 17%, and 6% were archived (authors have not returned the revisions in due time), which gives an acceptance rate of 77%. The Editorial Board acknowledges the authors who submitted their research, and the cooperation of the reviewers for the time they dedicated, since peer review is essential for the publication process, in order to ensure the desired high quality standards for the published papers.

Evandro Klein
Editor-in-Chief
 On behalf of the Editorial Board

Reviewer	Affiliation	City/Country*
Adolfo Quesada-Román	Universidad Nacional de Costa Rica	San José/Costa Rica
Airton Natanael Coelho Dias	Universidade Federal de São Carlos	São Carlos
Alex Peggia	Independent Consultant	São Paulo
Alexandre Uhlein	UFMG – Universidade Federal de Minas Gerais	Belo Horizonte
Alanielson Ferreira	Stellenbosch University	Stellenbosch/South Africa
Andréa Ritter Jelinek	UFRGS – Universidade Federal do Rio Grande do Sul	Porto Alegre
Amarildo Salinas Ruiz	UFMT – Universidade Federal do Mato Grosso	Cuiabá
André Weissheimer de Borba	UFSM – Universidade Federal de Santa Maria	Santa Maria
Antonio Gilberto Costa	UFMG – Universidade federal de Minas Gerais	Belo Horizonte
Antonio Liccardo	UEPG – Universidade Estadual de Ponta Grossa	Ponta Grossa
Atlas Correa Neto	UFRJ – Universidade Federal do Rio de Janeiro	Rio de Janeiro
Avish Kumar	James Cook University	Townsville/Australia
Carlos E.V. Toledo	USP – Universidade de São Paulo	São Paulo
Cayo Pontes	UFRN – Universidade Federal do Rio Grande do Norte	Natal
Claudia Passarelli	USP – Universidade de São Paulo	São Paulo
Claudio Valeriano	UERJ – Universidade Estadual do Rio de Janeiro	Rio de Janeiro
Daniel Patias Guimarães	University of Queensland	Brisbane/Australia
Eduardo Mansur	Université de Québec à Chicoutimi	Chicoutimi/Canada
Eduardo Salamuni	UFPR – Universidade Federal do Paraná	Curitiba
Estanislau Luczynski	UFPA – Universidade Federal do Pará	Belém
Felipe Grandjean Costa	Geological Survey of Brazil	Fortaleza
Francisco Ferreira	UFPR – Universidade Federal do Paraná	Curitiba
Geoff Howarth	University of Cape Town	Cape Town/South Africa
Gilberto Calaes	Geological Survey of Brazil	Rio de Janeiro
Gilson Guimarães	UEPG – Universidade Estadual de Ponta Grossa	Ponta Grossa
Joana Rodrigues	Geopark Naturejo	Castelo Branco/Portugal
João Milhomem Neto	UFPA – Universidade Federal do Pará	Belém
John Ridley	Colorado State University	Fort Collins/USA
José Brilha	Universidade do Minho	Braga/Portugal
Juliana Okubo	UNESP – Universidade Estadual Paulista	Rio Claro
Lauro Montefalco Santos	UFPE – Universidade Federal de Pernambuco	Recife
Lydia M. Lobato	UFMG – Universidade Federal de Minas Gerais	Belo Horizonte
Maísa Abram	Geological Survey of Brazil	Salvador
Marcia A. Barros	UFMT – Universidade Federal do Mato Grosso	Cuiabá
Maria Helena Henriques	Universidade de Coimbra	Coimbra/Portugal
Mariana Brando Soares	UFRJ – Universidade Federal do Rio de Janeiro	Rio de Janeiro
Mauro Gerales	UERJ – Universidade estadual do Rio de Janeiro	Rio de Janeiro
Miguel Tupinambá	UERJ – Universidade do Estado do Rio de Janeiro	Rio de Janeiro
Moacir Macambira	UFPA – Universidade Federal do Pará	Belém
Reginaldo Alves dos Santos	Independent Consultant	Salvador
Ricardo Eustáquio Fonseca Filho	UFOP – Universidade Federal de Ouro Preto	Ouro Preto
Sandra Villacorta	Charles Darwin University	Darwin/Australia
Sergio P. Neves	UFPE – Universidade Federal de Pernambuco	Recife
Ticiano Santos	Unicamp	Campinas
Václav Metelka	CSIRO	Canberra/Australia
Vitor Barrote	Monash University	Melbourne/Australia
Wagner Amaral	Unicamp	Campinas
Yang Chu	Chinese Academy of Sciences	Beijing/China

*Brazil, unless otherwise stated



Journal of the Geological Survey of Brazil

Published on line at: jgsb.cprm.gov.br
ISSN: 2595-1939
DOI: <https://doi.org/10.29396>
DOI of this edition:
<https://doi.org/10.29396/jgsb.2021.v4.n3>

Contact:
Editor-in-Chief
SBN, Q. 2, Bloco H, 1° andar
Edifício Central Brasília
Brasília - DF - Brazil
CEP: 70040-904
Phone: +55 61 2108.8400
e-mail: editor_jgsb@cprm.gov.br

EDITORIAL BOARD

Editor-in-Chief

Evandro Luiz Klein, CPRM – Geological Survey of Brazil, Brasília, Brazil

Associate Editors

Adalene Moreira Silva, UnB – Universidade de Brasília, Brazil
Carlos Alberto Spier, University of Queensland, Brisbane, Australia
Cassio Roberto da Silva, CPRM – Geological Survey of Brazil, Rio de Janeiro, Brazil
Chris Harris, UCT – University of Cape Town, South Africa
David Lopes de Castro, UFRN – Universidade Federal do Rio Grande do Norte, Natal, Brazil
Fabricio de Andrade Caxito, UFMG – Universidade Federal de Minas Gerais, Belo Horizonte, Brazil
Henri Masquelin, Universidad de la República, Montevideo, Uruguay
Jean Michel Lafon, UFPA – Universidade Federal do Pará, Belém, Brazil
Katia Leite Mansur, UFRJ – Universidade Federal do Rio de Janeiro, Rio de Janeiro, Brazil
Lena Virgínia Soares Monteiro, USP – Universidade de São Paulo, Brazil
Luciano Soares da Cunha, UnB – Universidade de Brasília, Brazil
Luiz Carlos da Silva, CPRM – Independent Consultant, Belo Horizonte, Brazil
Martin Roddaz, Université Toulouse III - Paul Sabatier, Toulouse, France
Riadh Abidi, Université de Tunis El Manar, Faculté des Sciences de Tunis, Tunisia
Rodrigo Scalise Horodyski, Unisinos, São Leopoldo, Brazil
Sandra Fernandes da Silva, CPRM – Geological Survey of Brazil, Belo Horizonte, Brazil
Steffen Hagemann, UWA – University of Western Australia, Perth, Australia
Vladimir Cruz de Medeiros, CPRM – Geological Survey of Brazil, Natal, Brazil

Advisory Board

Ana Maria Dreher, CPRM – Independent Consultant, Rio de Janeiro, Brazil
Daniel Medeiros Moreira, CPRM – Geological Survey of Brazil, Rio de Janeiro, Brazil
Leda Maria Barreto Fraga, CPRM – Geological Survey of Brazil, Rio de Janeiro, Brazil
Lucia Travassos da Rosa Costa, CPRM – Geological Survey of Brazil, Belém, Brazil
Luiz Gustavo Rodrigues Pinto, CPRM - Geological Survey of Brazil, São Paulo, Brazil
Marcelo Eduardo Dantas, CPRM – Geological Survey of Brazil, Rio de Janeiro, Brazil
Marcelo Esteves Almeida, CPRM – Geological Survey of Brazil, Rio de Janeiro, Brazil
Marta Vasconcelos Ottoni, CPRM – Geological Survey of Brazil, Rio de Janeiro, Brazil
Pedro Augusto dos Santos Pfaltzgraff, CPRM – Geological Survey of Brazil, Rio de Janeiro, Brazil
Rodrigo Rodrigues Adorno, CPRM – Geological Survey of Brazil, Brasília, Brazil
Sheila Gatinho Teixeira, CPRM – Geological Survey of Brazil, Belém, Brazil



GEOLOGICAL SURVEY OF BRASIL
CPRM

jgsb.cprm.gov.br