



Digital Supplement - Appendix

Geochemical and isotopic constraints on the petrogenesis of the Cretaceous alkaline Morro Redondo intrusive complex, Rio de Janeiro, Brazil: implications for alkaline magma genesis

Carlos Eduardo Mota¹, Arthur de Melo Said Fabião Moreira da Silva², Fred Jourdan³, Mauro Cesar Geraldés⁴, Guilherme Loriato Potratz^{2*}

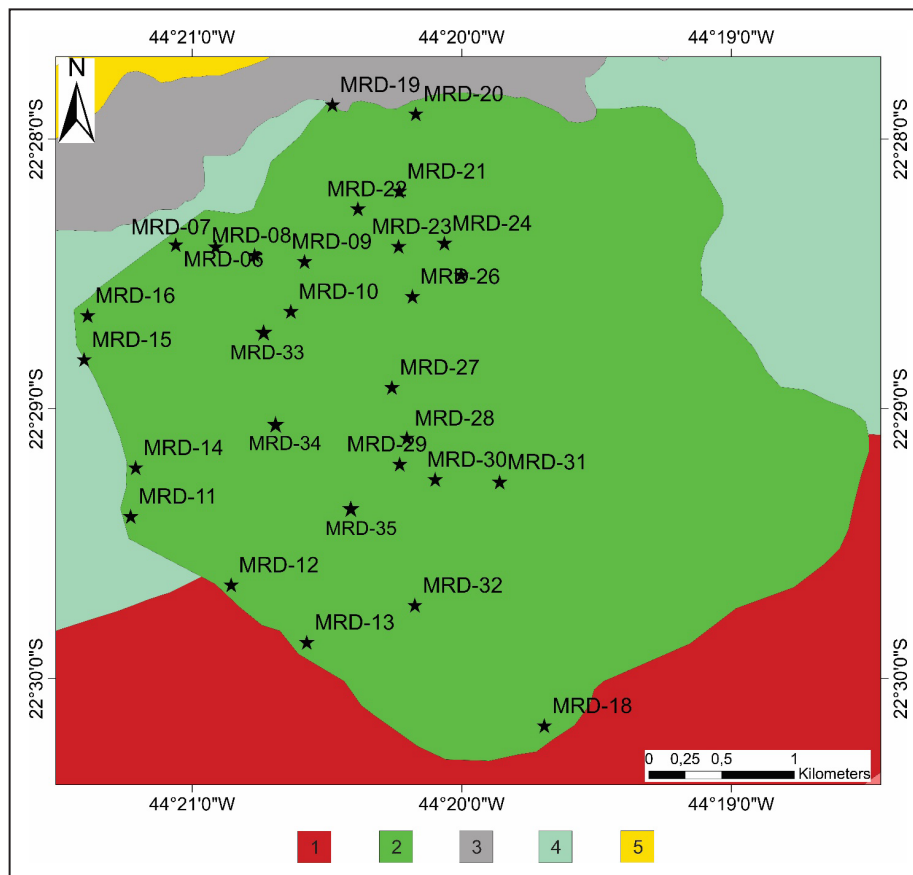
¹Geological Survey of Brazil-CPRM, Av. Pasteur, 404, Urca, Rio de Janeiro-RJ, Brazil, CEP 22290-255

²Postgraduate Program in Geosciences, Rio de Janeiro State University. Rua São Francisco Xavier, 524, Rio de Janeiro - RJ - CEP: 20550-900

³Western Australian Argon Isotope Facility, John de Laeter Centre & School of Earth and Planetary Sciences, Curtin University, Building 301, Australia

⁴Department of Mineralogy and Igneous Petrology. Rio de Janeiro State University. Rua São Francisco Xavier, 524, Rio de Janeiro - RJ - CEP: 20550-900

APPENDIX 1. Map of sample collection points



LEGEND:

1 – Taquaral Complex; 2 – Morro Redondo Complex; 3 – Rezende Formation; 4 – Embu unit; 5 - Alluvial deposits

