








Publisher's note:

Erratum to: Short Communication on “Updated geological map of the Borborema Province, northeastern Brazil”

Frank Gurgel Santos^{1*} , Débora Melo Ferrer de Moraes¹ , Tercyo Rinaldo Gonçalves Pinéo² ,
Jocilene dos Santos Santana³ , Vladimir Cruz de Medeiros⁴ .

¹SGB/CPRM - Serviço Geológico do Brasil (Superintendência Regional de Recife), Avenida Sul, 2291, Afogados, Recife, Pernambuco, Brazil, CEP: 50.770-011

²SGB/CPRM - Serviço Geológico do Brasil (Residência de Fortaleza), Avenida Antônio Sales, 1418, Joaquim Távora, Fortaleza, Ceará, Brazil, CEP: 60.135-101

³SGB/CPRM - Serviço Geológico do Brasil (Superintendência Regional de Salvador), Avenida Ulysses Guimarães, 2862, Sussuarana - Centro Administrativo da Bahia, Salvador, Bahia, Brazil, CEP: 41.213-000

⁴SGB/CPRM - Serviço Geológico do Brasil (Núcleo de Apoio de Natal), Avenida Almirante Alexandrino de Alencar, 1402, Tirol, Natal, RN, Brazil, CEP: 59.015-350

Erratum

The Publisher regrets that due to a production error, this article was published with the wrong version of Figure 1 on page 130.

The correct figure is as below and the original pdf file of the article has been replaced by the updated and correct file, which can be downloaded at <https://jgsb.sgb.gov.br/index.php/journal/article/view/205/130>

Article Information

Publication type: Short Communication

Received 20 March 2023

Accepted 11 April 2023

Online pub. 26 April 2023

Erratum date: 12 July 2023

Editor ad hoc: L.T. Rosa-Costa

Keywords:

Greenstone belt
Volcanic associations
Rhyacian basin
Ediacaran sedimentation
São Francisco Craton

*Corresponding author

Frank Gurgel Santos

E-mail address: frank.santos@sgb.gov.br

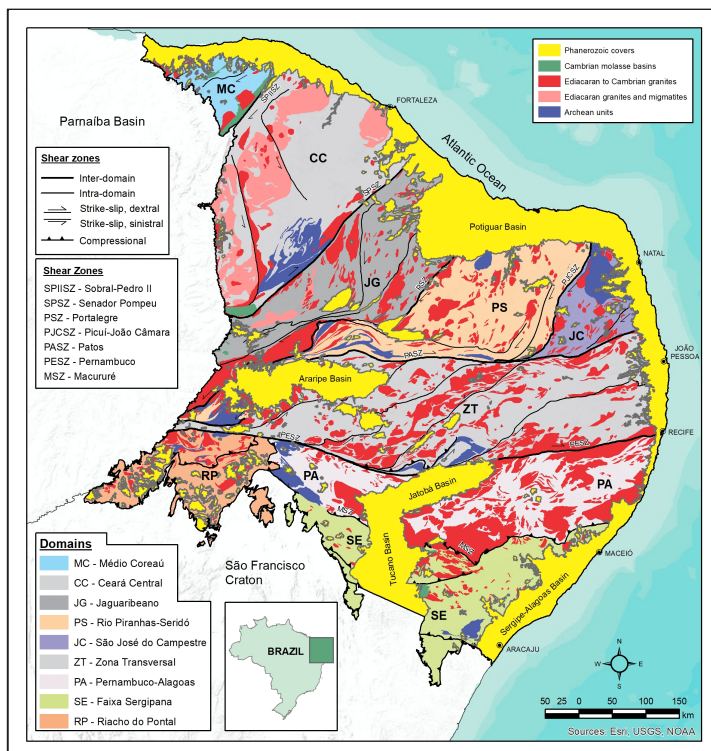


FIGURE 1. Tectonic subdivision of the Borborema Province according to Delgado et al. (2003) (adapted from Medeiros et al. 2021, with updates from Santos et al. 2023).

